

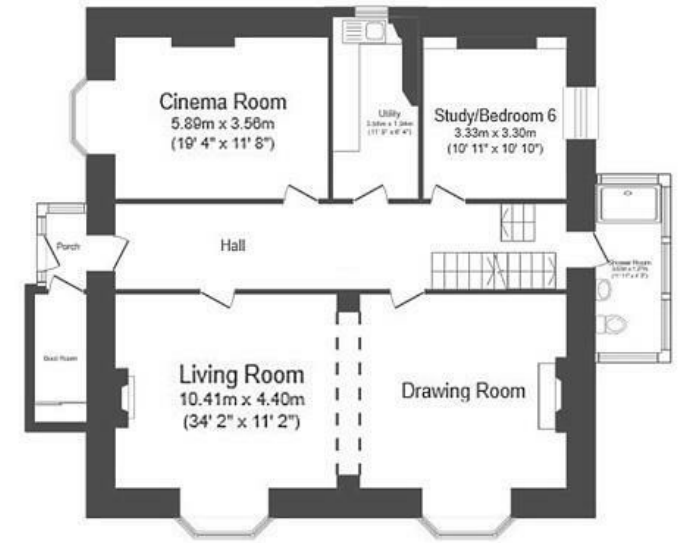
Hill Road

CLEVEDON

APPROXIMATE FLOOR AREA
332.5 SQM / 3579 SQFT



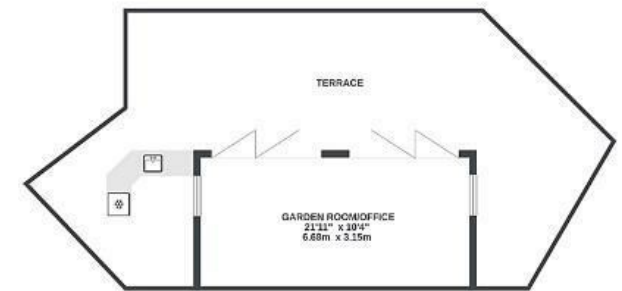
Lower Ground Floor
Floor area 101.1 sq.m. (1,088 sq.ft.)



Ground Floor
Floor area 122.2 sq.m. (1,316 sq.ft.)



First Floor
Floor area 109.1 sq.m. (1,174 sq.ft.)



GARDEN ROOM/OFFICE
(NOT INC IN TOTAL SQ.M)
0 sq.ft. (0.0 sq.m.) approx.

Illustrations are for reference purposes only, measurements are approximate, not to scale.

Boardwalk

Hill Road

, CLEVEDON

£

£1,395,000

zzz

6 Bedrooms



BS21 7NE



4 Bathrooms

'Woodspring House is one of a kind! We've transformed the property in our 7 years and recreated the garden into fun zones, all with spectacular views and birdsong. Home working in the heavens has been a treat! Daylight flooding the front rooms and garden. The living room bays are distinctive and high ceilings, ornate features bring a smile daily'

